

# Sustaining Places & The Scales of Planning

William Anderson, FAICP

Director, City & Regional Planning, AECOM

[William.anderson3@aecom.com](mailto:William.anderson3@aecom.com)



The earth reaches a milestone: tomorrow, by next year, for the first time in history, more than half its population will be living in cities. Those 3 billion people are expected to grow to 5 billion by 2025 - this strange map of the world shows where those people live now.





# 2065?

10.4 billion global population  
@ 67% urban =

7.0 billion global urban  
population

or

3.7 billion more people in  
cities =

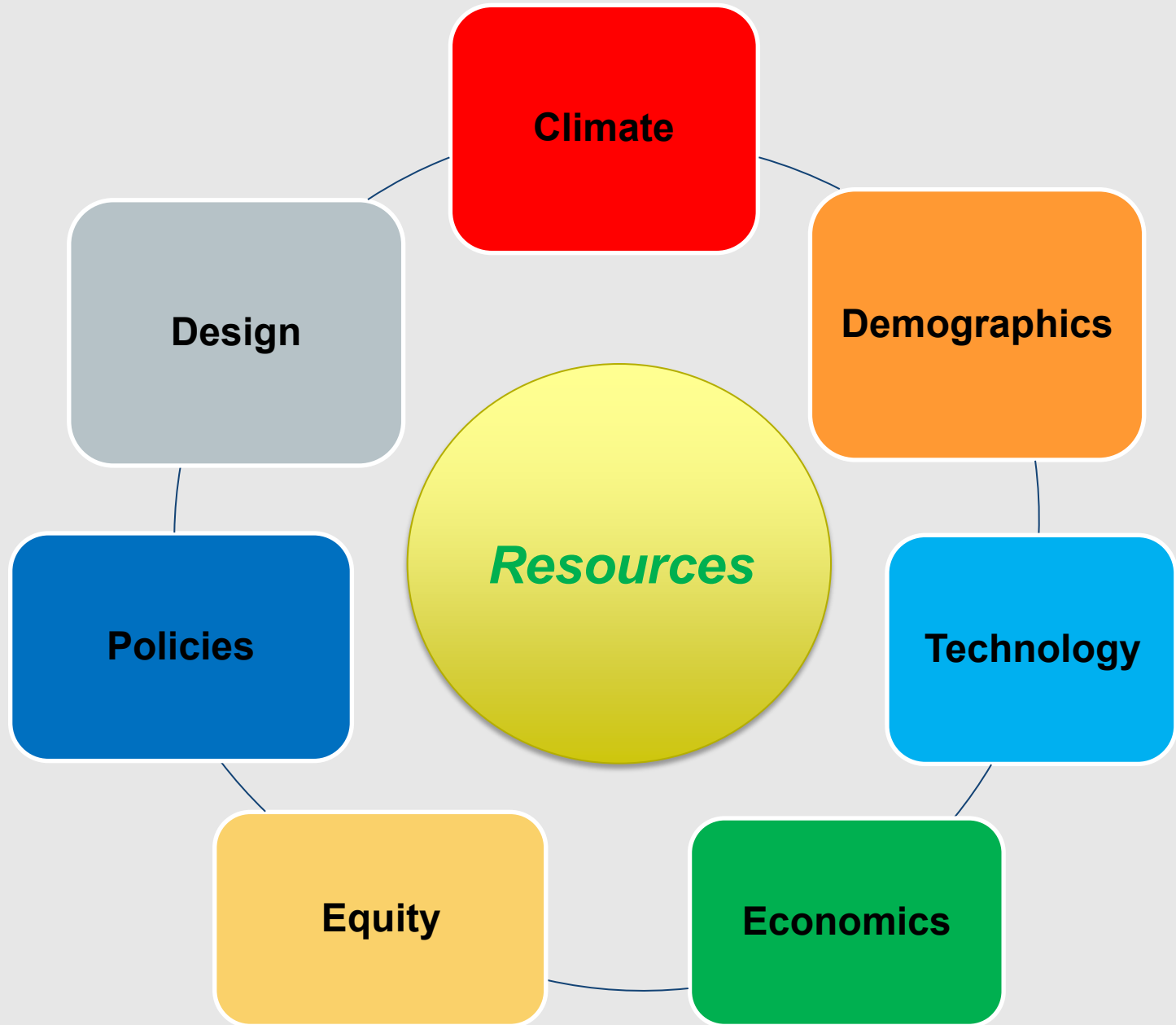
433 New York Cities (9/yr.)

or

973 Cities of Los Angeles  
(20/yr.)

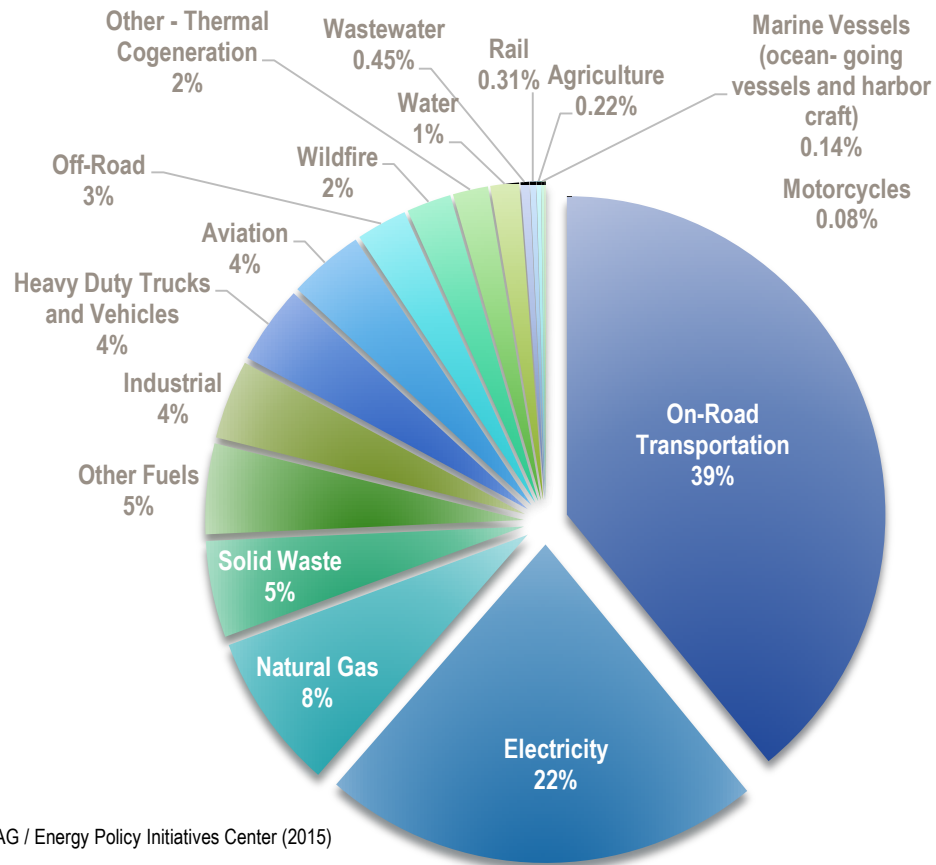


Source: AECOM



# Climate Change Response – Defining Challenge of the 21<sup>st</sup> Century

---







Source: AECOM

**Livable built environment**

**Harmony with nature**

**Resilient economy**

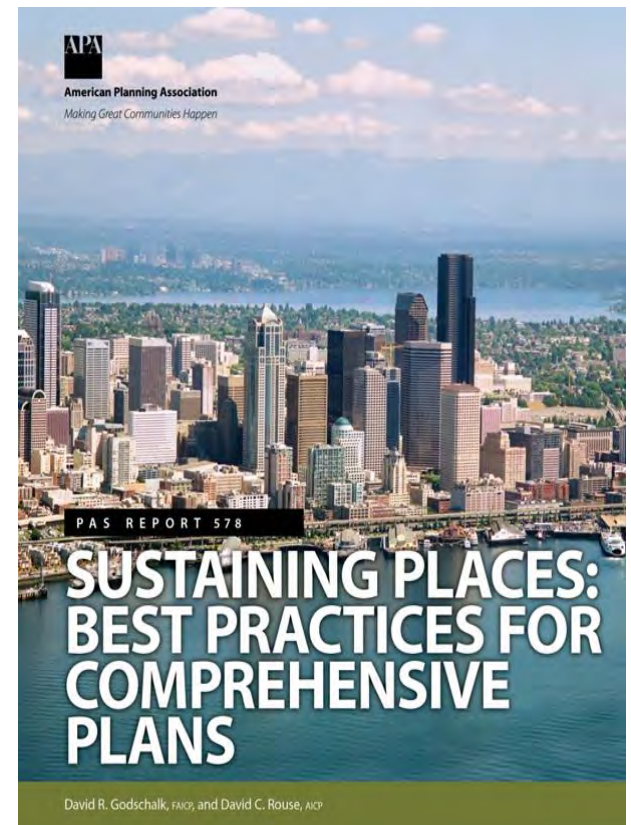
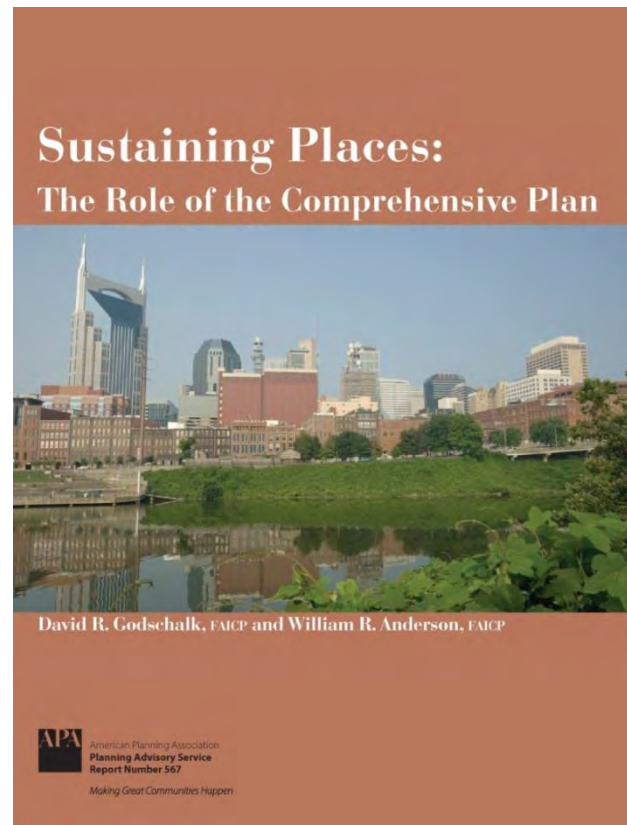
**Interwoven equity**

**Healthy communities**

**Responsible regionalism**

**Authentic participation**

**Accountable implementation**



# Traditional Community Planning Assumptions

---

## *Past foretells future*

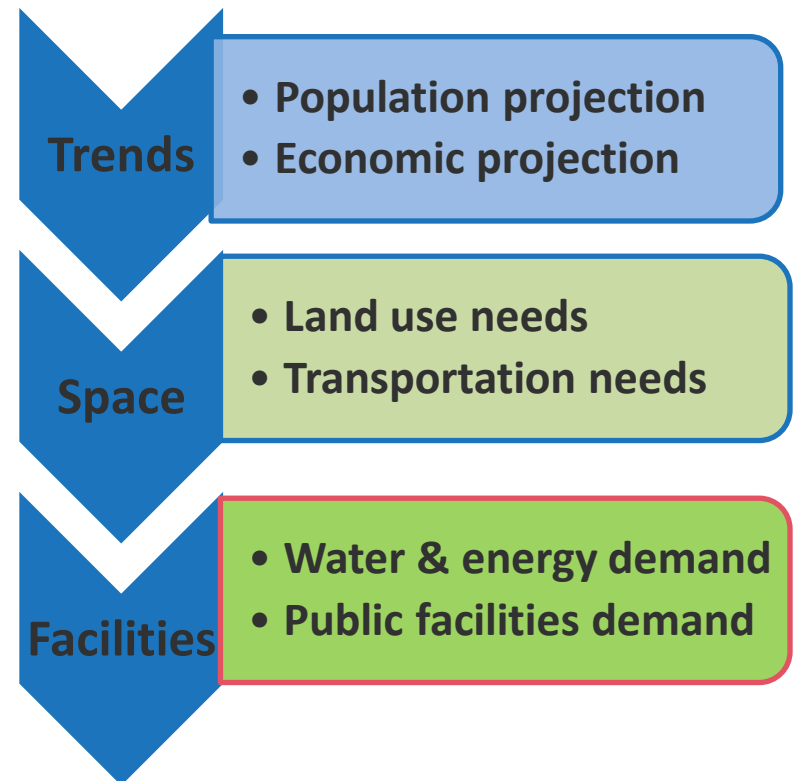
economic & population growth projections

## *Adjust plans every 20 years*

land use, transportation, & public facilities

## *All else remains relatively stable*

- Climate conditions
- Water resources
- Energy supply
- Agriculture
- Ecosystems
- Human health
- Natural hazards





# New Realities

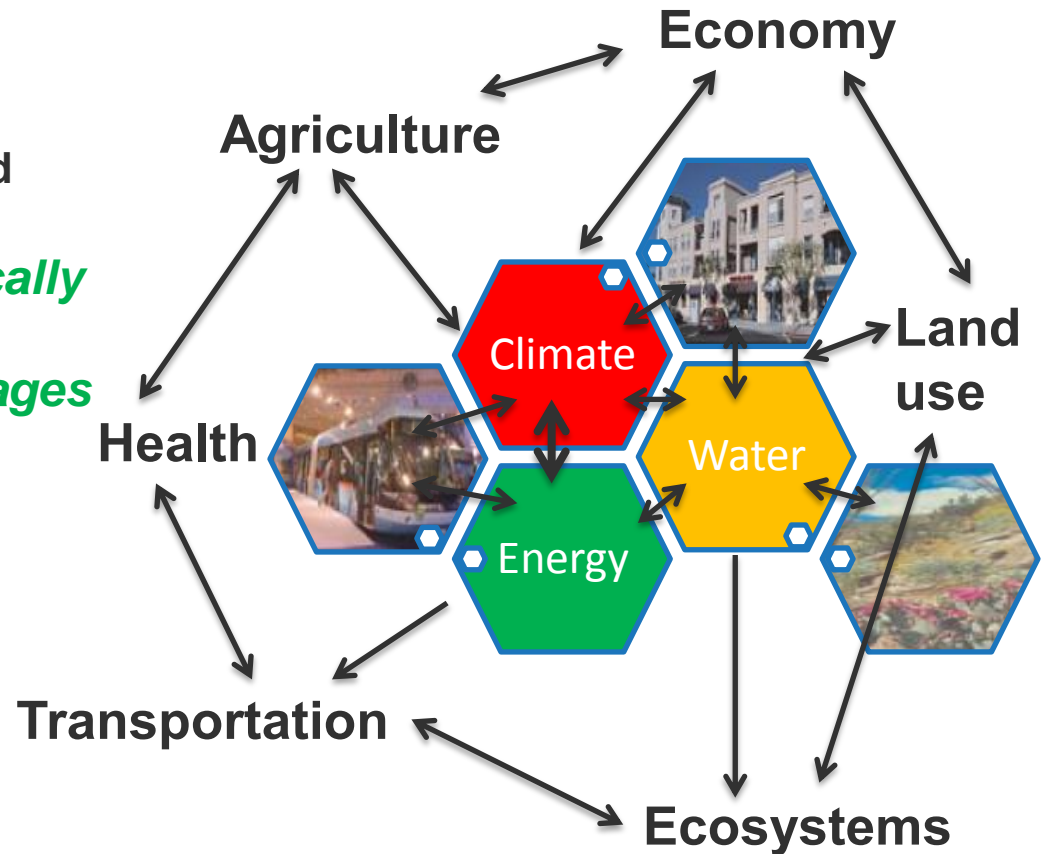
*Future is evolving & uncertain*

growth/decline must be monitored

*Plans respond to change strategically*

*Sources of instability include linkages among:*

- Climate condition
- Water resources
- Energy supply
- Agriculture
- Ecosystems
- Economy
- Human health
- Natural hazards



# Vertical Integration of Plans

The Scales of Planning  
Sustaining Places



# Example: San Diego

A City Set in a  
Bio-Diverse Region

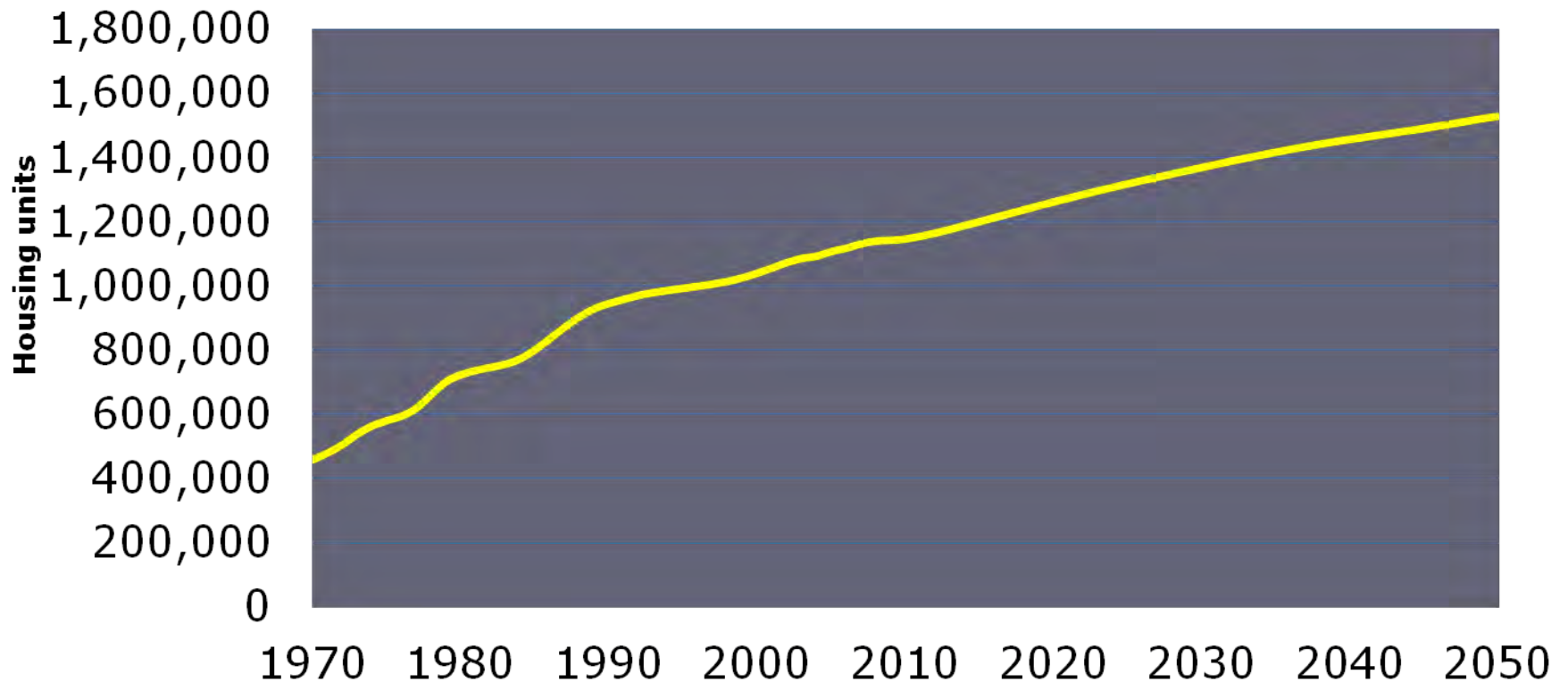


**City Planning & Community Investment**

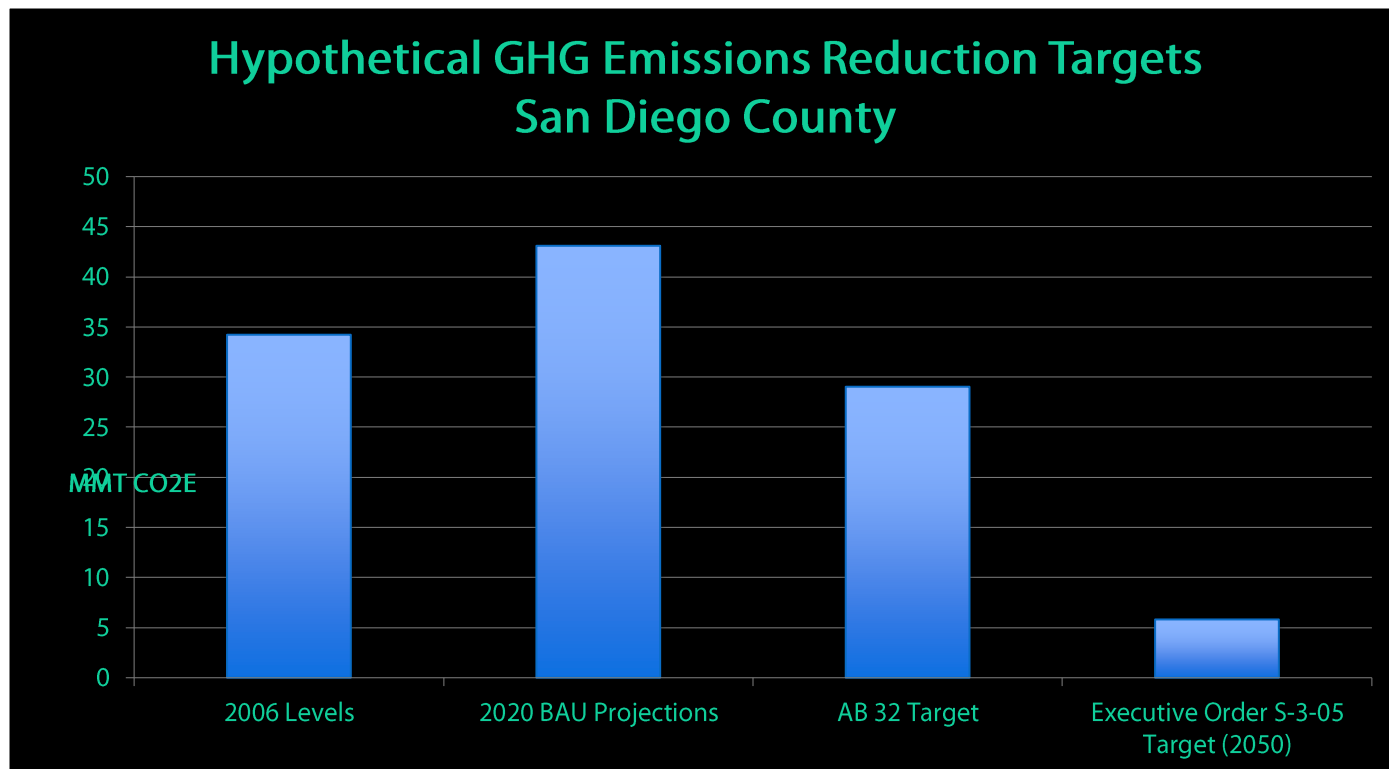


# Housing Growth in the San Diego Region

---



# GHG Inventory Project Results





Our vision. Our future.  
THE REGIONAL COMPREHENSIVE PLAN



# Regional Comprehensive Plan

for the  
San Diego  
Region

Final  
July 2004

RCP



# Habitat Conservation Lands in San Diego

Orange County

Riverside County

San Diego County



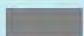

Imperial County

PACIFIC OCEAN

UNITED STATES

MEXICO

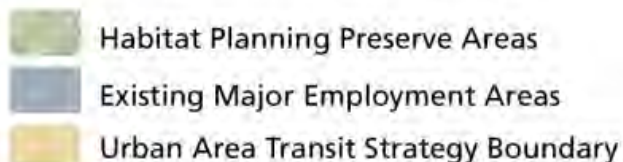
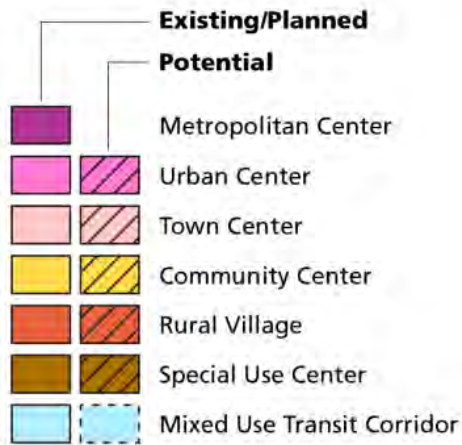


-  County Water Authority Boundary
-  Conserved and Proposed Habitat Lands
-  Military Lands
-  Indian Reservation



# 2050 Regional Transportation Plan / Sustainable Communities Strategy

## Smart Growth Areas



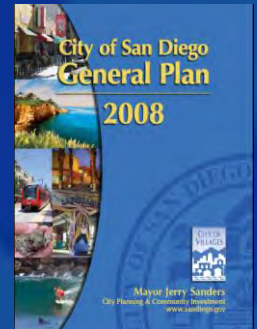








# A City of Villages



1. An **open space network** formed by parks, canyons, river valleys, habitats, beaches, and oceans;
2. **Diverse** residential communities formed by the open space network;
3. Compact and walkable mixed-use **villages of different scales** within communities;
4. **Employment centers** for a strong economy;
5. An **integrated** regional **transportation network** of transit, roadways, and freeways that efficiently link communities and villages to each other and to employment centers;
6. High quality, affordable, and **well-maintained public facilities** to serve the City's population, workers, and visitors;
7. Historic districts and sites that respect our **heritage**;
8. **Balanced communities** that offer opportunities for all San Diegans and share citywide responsibilities;
9. A clean and **sustainable environment**; and
10. High **aesthetic standards**.



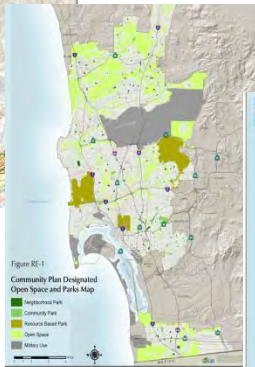




# A City of Villages



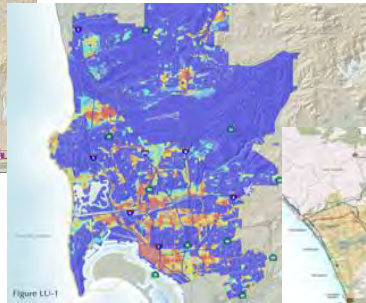
Bio-diversity



Open space + parks



Economic Base

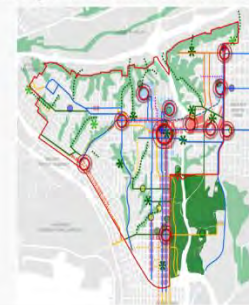


Villages



Transit + Mobility

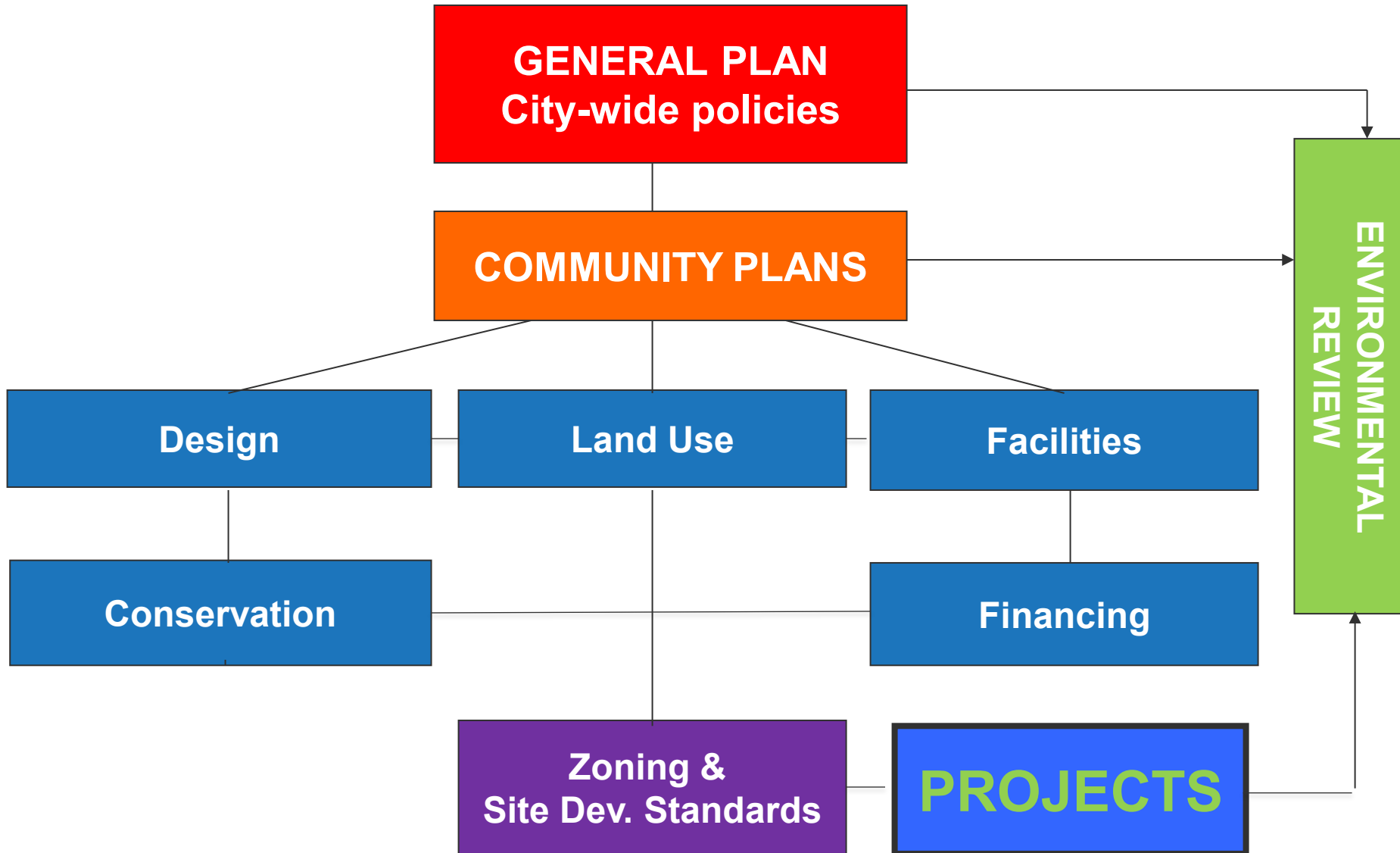
Conceptual Urban Form Framework



Community



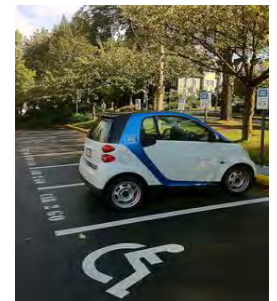
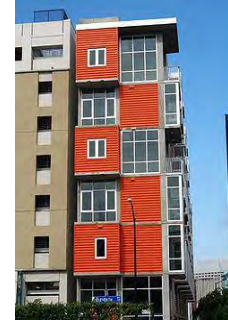




**“The practice of  
planning is going to  
have to change.  
How?”**

# Plan for market choices

**Mobility**  
**Housing**  
**Job Places**  
**Community**





# Plan for health



## HEALTH


The Planning and Community Health Research Center advances plans and policies for improving the built environment to promote public health.



Planning and Community Health  
Research Center



My APA

Anna Ricklin

 Your membership is paid through December 31, 2013

-  Go to My APA
-  Customer service



Primary chapter:  
National Capital

[Logout](#)



Find out more about APA's Professional Institute

 American Institute of Certified Planners



# HEALTHY PLANNING

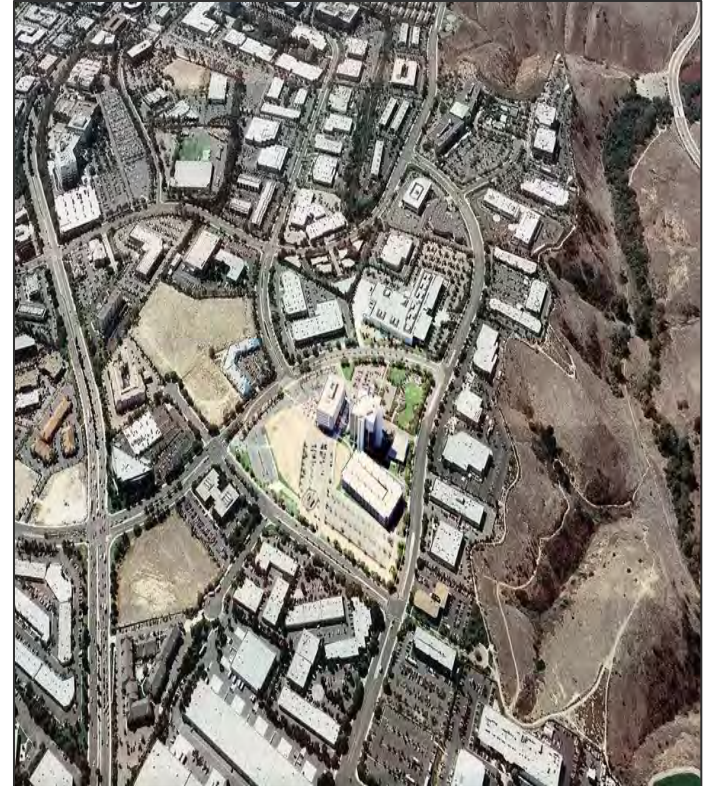
An evaluation of comprehensive and sustainability plans addressing public health



American Planning Association  
Making Great Communities Happen

# Plan for economic prosperity

- **Base Sector Capacity**
  - Identify Prime Industrial lands
  - Limit incompatible land use intrusions
- **Community Investment**
  - Access to capital
  - Redevelopment
  - Infrastructure investments
- **Workforce Quality of Life**
  - Middle-income job opportunities
  - Workforce housing in villages
  - Education and training
  - Higher quality good jobs/living wage issue
- **Collocation Policies**





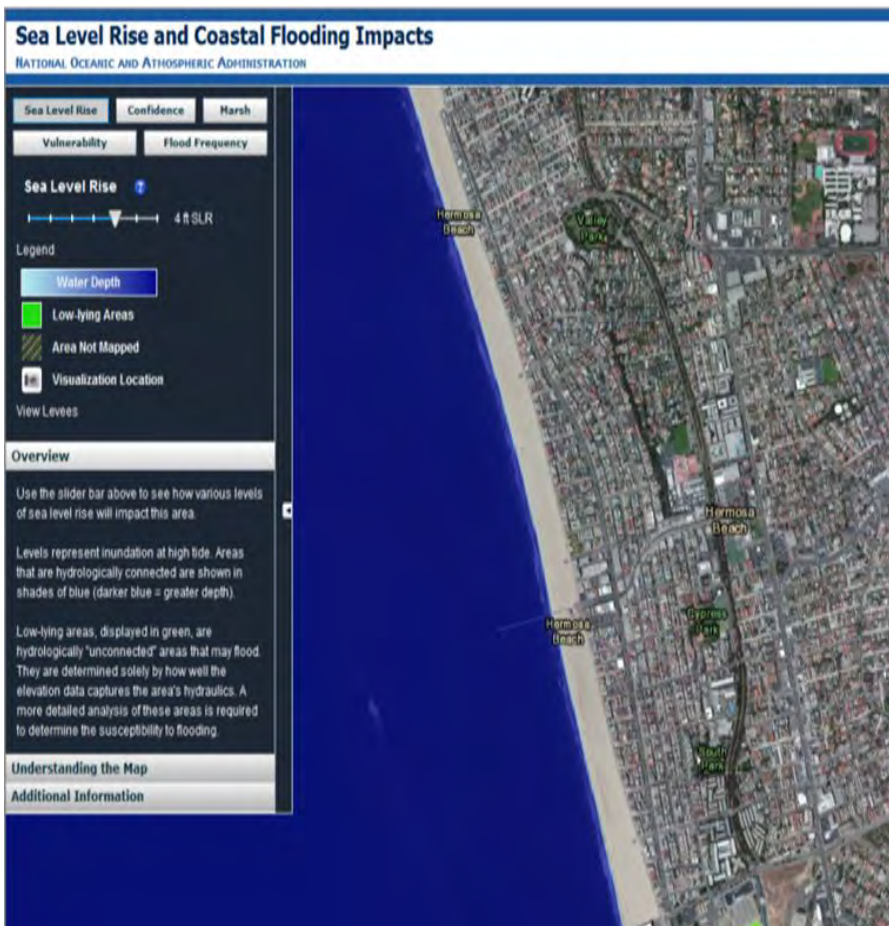
# Plan for access





# Plan for resilience

# HAZARDS



## Global Climate Change Impacts in the United States

U.S. Global Change Research Program

### HIGHLIGHTS

- How has climate already changed?
- How is it likely to change in the future?
- How is climate change affecting us now where we live and work?
- How is it likely to affect us in the future?



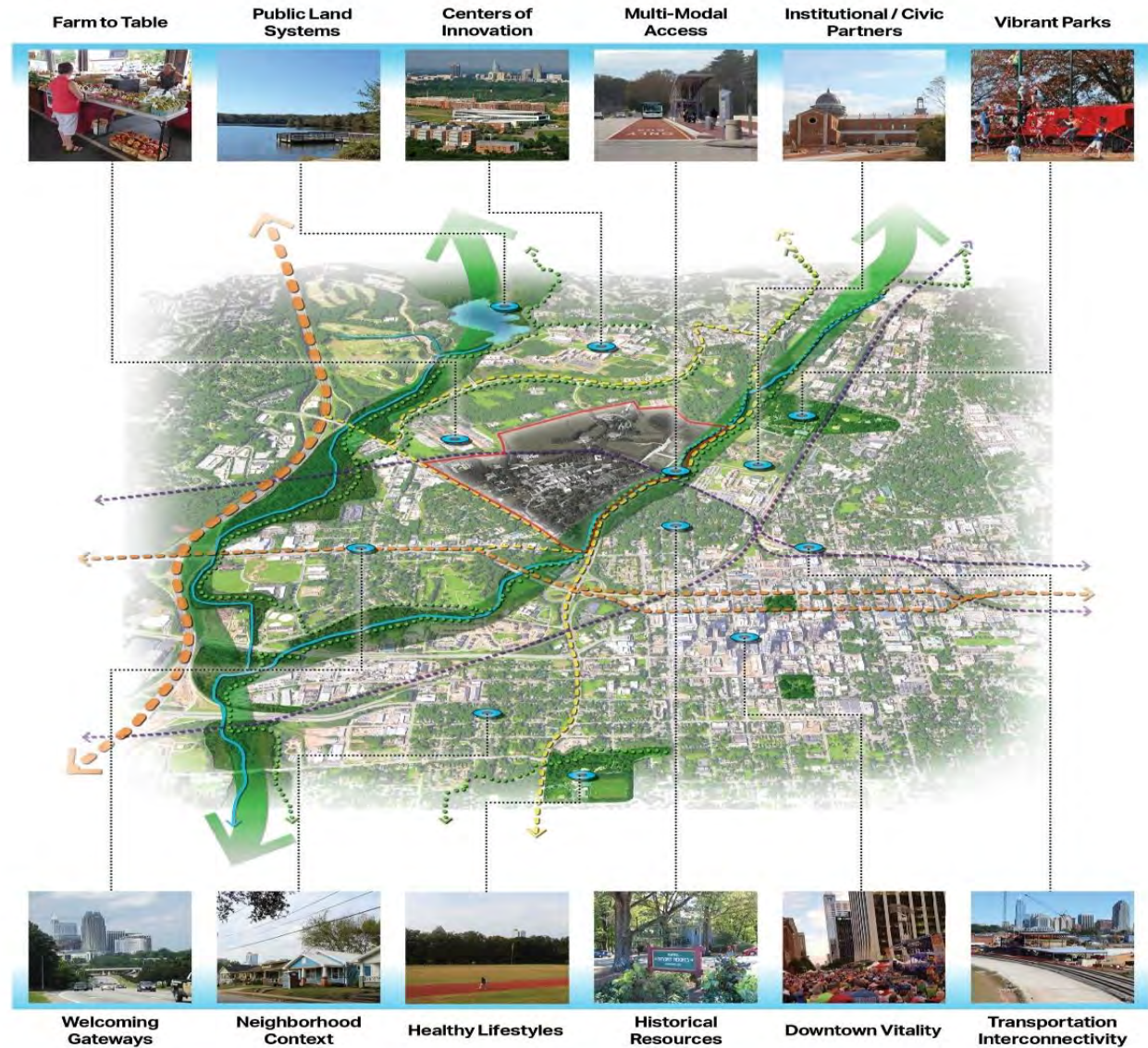
# Plan to make housing affordable



- Density bonus and incentives
- Parking reductions
- Reduced permitting transaction costs
- Lower decision-making process level approvals
- Increased housing capacity & supply
- Inclusionary housing
- Housing Commission programs
- **Reduced impact fees through efficient infrastructure design and land use coordination**



# Plan for co-benefits

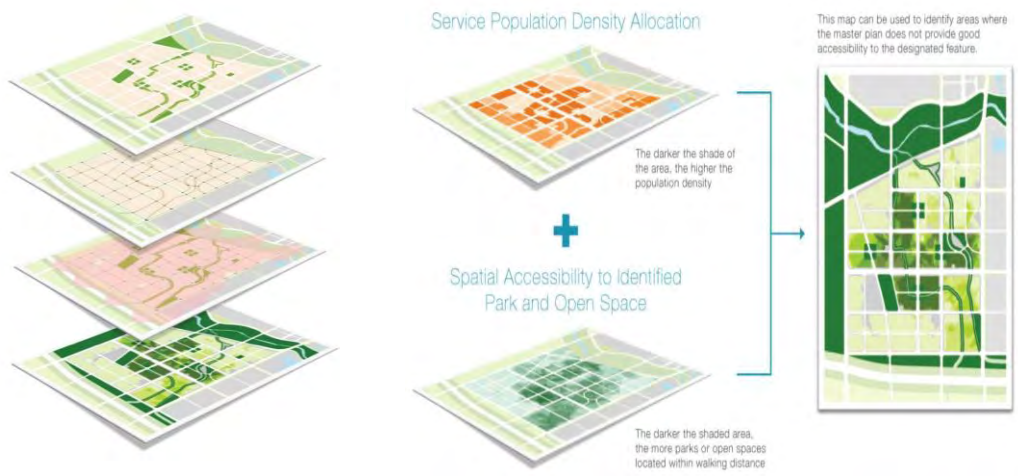




**"The infusion of place-making into infrastructure is a gigantic ball of transformation that's rolling, at different speeds in different places."**

# Urban Design Performance Analysis

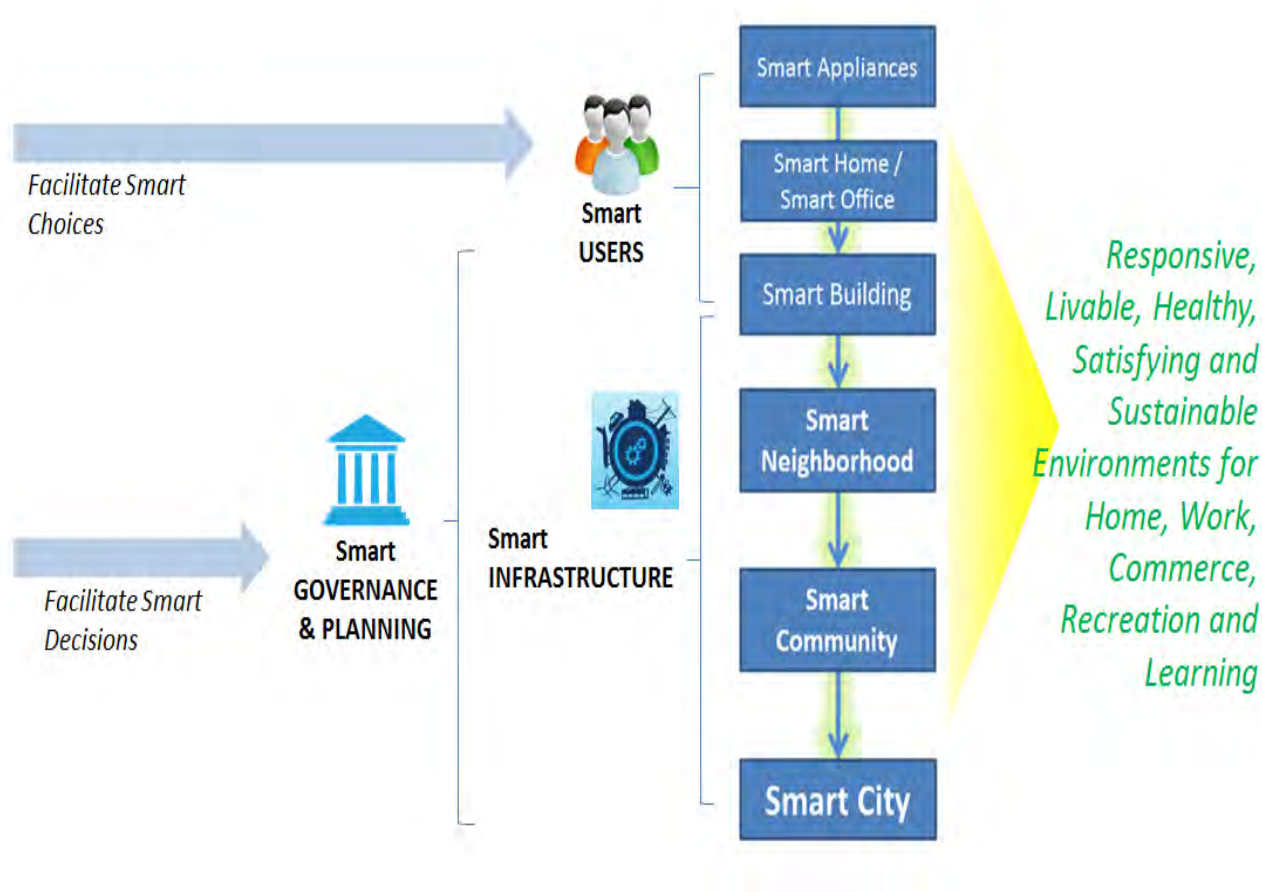
## GIS Analysis



# Smart City Concepts

**Smart = Data Intelligence + Better Decisions**

Smart Cities are a growing trend around the world





# Thank you

William Anderson, FAICP  
Director, City & Regional Planning, AECOM  
[William.anderson3@aecom.com](mailto:William.anderson3@aecom.com)