

PROP I - URBAN DIVERSION

PACIFIC GROVE AND MONTEREY ASBS WET-DRY WEATHER STORMWATER CAPTURE AND DIVERSION



PURPOSE



To implement projects that will reduce or eliminate the potential for urban stormwater runoff from reaching the PG Area of Special Biological Significance (ASBS)

- ASBS are a subset of state water quality protection areas



ASBS STUDIES, PROJECTS, AND REGIONAL EFFORTS

2001-2007 Phases 1 & 2 Urban Diversions (Clean Beaches Initiative Grants)

2006 Regional ASBS Alternatives Analysis

2011 Phase 3 Urban Diversion (Prop. 40 grant)

2012 SWRCB Approval - ASBS Special Protections

2012-2014 Refined Feasibility Study – 40% Design Engineer. Rpt.

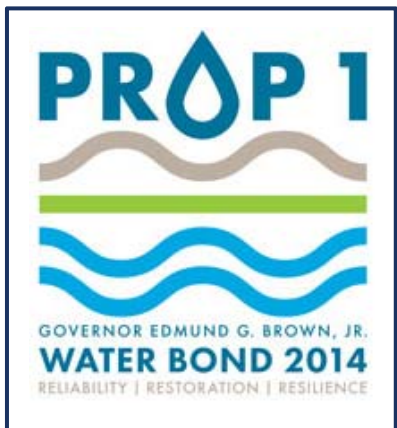
2013-2016 Central Coast Regional ASBS Monitoring Effort

2014-2016 Finalized 'PG ASBS Compliance Plan'

2016-2020 Prop I ASBS Implementation Grant/Project - Award/Implement



AWARDED PROPI GRANT

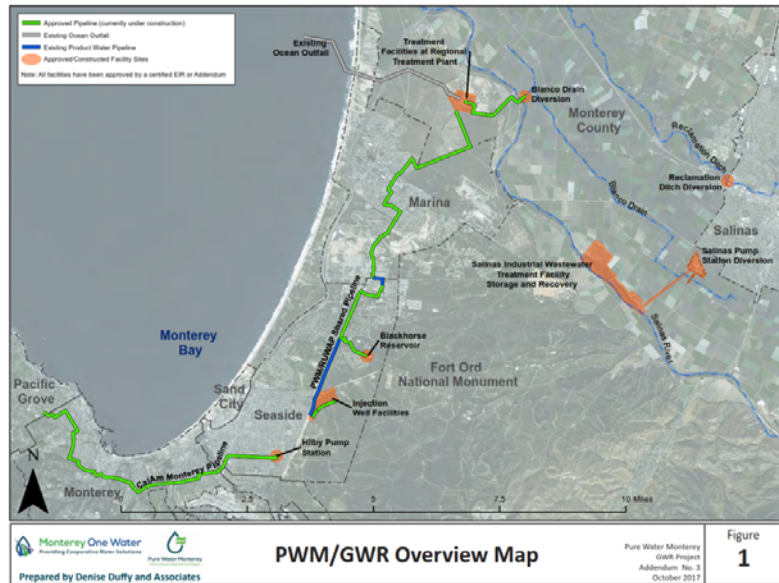


- Protects the ASBS and Provides a Supplemental Water Supply Source
- Grant Awarded - \$4,427,229
 - Construct Phase 4 urban diversion system (Lovers Pt/Sea Palm)
- Matching Funds - \$4,518,943
 - In-Kind Services
 - City of Pacific Grove Sewer Rehabilitation Funds
 - City of Monterey Sewer Rehabilitation Fund
 - Monitoring and Reporting
 - Education and Outreach



WATER SUPPLY ON THE PENINSULA

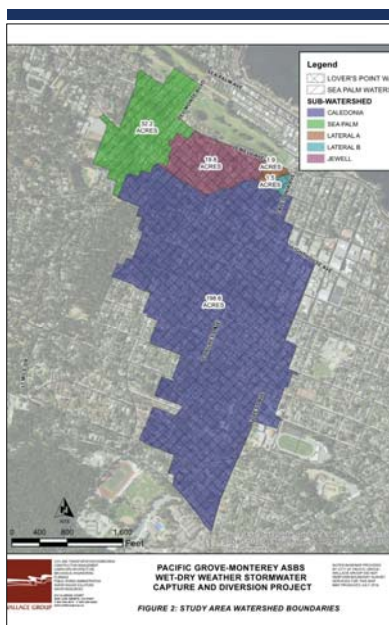
- Cal Am is the Primary Water Purveyor on the Peninsula
 - Cease and Desist Order to vacate off the Carmel River
 - Groundwater
- Majority of wastewater from the Peninsula goes to Monterey One Water Regional WWTF
- PG Scalping Plant



PACIFIC GROVE-MONTEREY ASBS WET-DRY WEATHER STORM WATER CAPTURE/DIVERSION

Project Goals

- Capture 100% of Dry Weather Flows
- Capture Runoff from the 85th Percentile Storm
 - ~0.8 inch/day storm



LOVERS POINT DIVERSION

- 221.8 acres
- 3.14 acre-feet (AF) of water diverted
- Total Diverted:
 - 44.1 AF in an Average Year
 - 12.8 AF in Dry Years
 - 108.0 AF in Wet Years
- 430,000 gal Buried Storage Tank
- Dedicated SW Main to LS 13



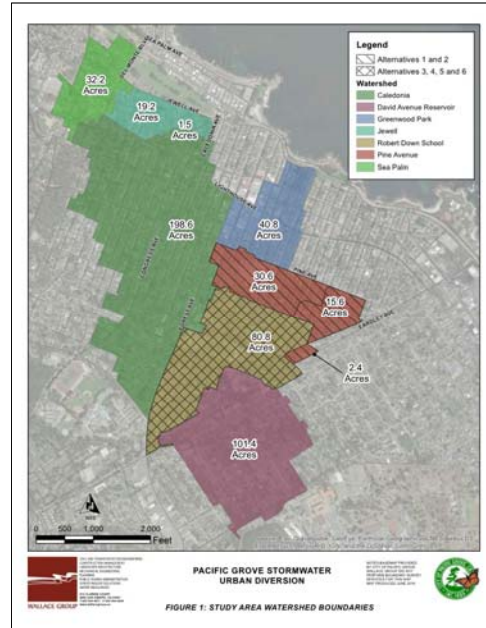
SEA PALM DIVERSION

- 32.2 acres
- 0.43 AF of water diverted
- Total Diverted:
 - 6.0 AF in an Average Year
 - 1.7 AF in Dry Years
 - 14.9 AF in Wet Years
- 50,000 gal Buried Storage Tank
- Joint Sewer/SW to LS 15



ADDITIONAL STUDIES

- City of Monterey
 - Grant Partner
- David Avenue Reservoir
- Pine Street
- Robert Down School
- Greenwood



Coastal Commission
Permitting

Complete
Final Design
(January 2019)

Bidding and
Construction

NEXT STEPS



FINAL THOUGHTS

- The Project was completed to protect the ASBS, not as a water supply source. This is an added benefit
- Peer Review resulted in a viable project
- Required creative thinking to identify matching funds
 - Required Teaming with City of Monterey
- Required support from Monterey One Water throughout the entire process



QUESTIONS

